

BCAT2 Antibody (N-term)
Purified Rabbit Polyclonal Antibody (Pab)
Catalog # AP20676a**Specification**

BCAT2 Antibody (N-term) - Product Information

Application	WB,E
Primary Accession	O15382
Reactivity	Human
Host	Rabbit
Clonality	Polyclonal
Isotype	Rabbit IgG

BCAT2 Antibody (N-term) - Additional Information**Gene ID** 587**Other Names**

Branched-chain-amino-acid aminotransferase, mitochondrial, BCAT(m), Placental protein 18, PP18, BCAT2, BCATM, BCT2, ECA40

Target/Specificity

This BCAT2 antibody is generated from a rabbit immunized with a KLH conjugated synthetic peptide between 44-78 amino acids from the N-terminal region of human BCAT2.

Dilution

WB~~1:1000

E~~Use at an assay dependent concentration.

Format

Purified polyclonal antibody supplied in PBS with 0.09% (W/V) sodium azide. This antibody is purified through a protein A column, followed by peptide affinity purification.

Storage

Maintain refrigerated at 2-8°C for up to 2 weeks. For long term storage store at -20°C in small aliquots to prevent freeze-thaw cycles.

Precautions

BCAT2 Antibody (N-term) is for research use only and not for use in diagnostic or therapeutic procedures.

BCAT2 Antibody (N-term) - Protein Information**Name** BCAT2

Function Catalyzes the first reaction in the catabolism of the essential branched chain amino acids leucine, isoleucine, and valine (PubMed:[17050531](#), PubMed:[25653144](#), PubMed:[8702755](#)). May also function as a transporter of branched chain alpha-keto acids (By similarity).

Cellular Location

Mitochondrion {ECO:0000250|UniProtKB:O35854}.

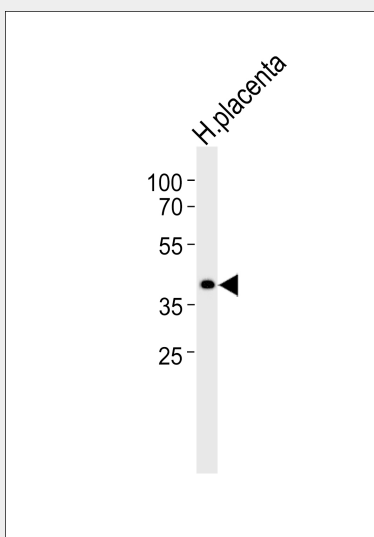
Tissue Location

Ubiquitous..

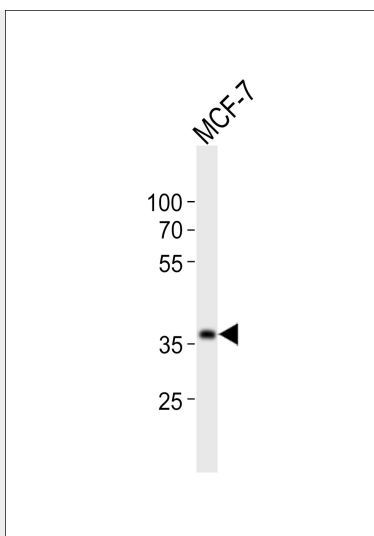
BCAT2 Antibody (N-term) - Protocols

Provided below are standard protocols that you may find useful for product applications.

- [Western Blot](#)
- [Blocking Peptides](#)
- [Dot Blot](#)
- [Immunohistochemistry](#)
- [Immunofluorescence](#)
- [Immunoprecipitation](#)
- [Flow Cytometry](#)
- [Cell Culture](#)

BCAT2 Antibody (N-term) - Images

Western blot analysis of lysate from human placenta tissue lysate, using BCAT2 Antibody (N-term) (Cat. #AP20676a). AP20676a was diluted at 1:1000. A goat anti-rabbit IgG H&L (HRP) at 1:5000 dilution was used as the secondary antibody. Lysate at 35ug.



Western blot analysis of lysate from MCF-7 cell line, using BCAT2 Antibody (N-term) (Cat. #AP20676a). AP20676a was diluted at 1:1000. A goat anti-rabbit IgG H&L (HRP) at 1:10000 dilution was used as the secondary antibody. Lysate at 20ug.

BCAT2 Antibody (N-term) - Background

Catalyzes the first reaction in the catabolism of the essential branched chain amino acids leucine, isoleucine, and valine. May also function as a transporter of branched chain alpha-keto acids.

BCAT2 Antibody (N-term) - References

Bledsoe R.K.,et al.Biochim. Biophys. Acta 1339:9-13(1997).
Than N.G.,et al.Placenta 22:235-243(2001).
Ota T.,et al.Nat. Genet. 36:40-45(2004).
Mural R.J.,et al.Submitted (JUL-2005) to the EMBL/GenBank/DDBJ databases.
Eden A.,et al.J. Biol. Chem. 271:20242-20245(1996).